

Skills for Life **at Work**

Quality improvement in Lifelong Learning



Who are New Futures?



New Futures is a consortium of the South East professional development centres. The Skills for Life Development Centre, working with the Essential Skills Support Unit and Thames Valley Professional Development Network, is leading this project throughout the South East region.

The consortium works in partnership with organisations, training providers and employers involved in Skills for Life, the national strategy for improving adult literacy and numeracy skills.

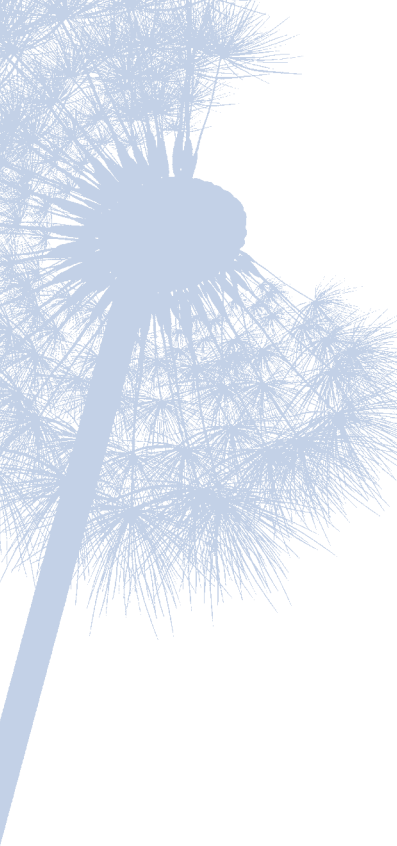
What's the project about?

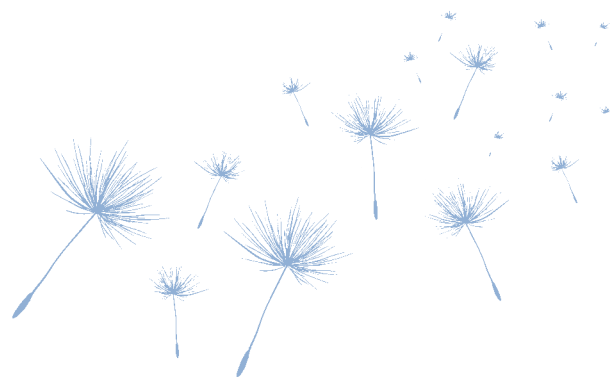
Skills for Life at Work is an innovative new European Social Fund project focusing on Skills for Life in the workplace.

The project was developed by the South East Regional LSC to support the delivery of Skills for Life in the workplace across the South East. The New Futures consortium secured the partnership of committed training providers and submitted a successful tender to deliver this project.

The project aims to support nearly 5000 employees in private, public and voluntary sectors across the South East, to improve their English, maths or language skills at work.

In addition, the project provides further support by offering continuing professional development courses to over 1500 professionals who work with, or support, Skills for Life learners in the workplace.





What does the project offer?

The project, which will run until December 2010, will offer:

Professional Development Training

- Flexible learning programmes
- Professional qualifications to staff who support Skills for Life in the workplace

Skills for Life Learners

- Maths, English and/or language courses contextualised for the employer sector
- Learning based on personal and employment needs
- Non-qualification outcomes for Skills for Life learners
- Progression routes to national qualifications, including Train to Gain

How is the project funded?

The Learning and Skills Council and the European Social Fund fund this programme.

Who benefits?

This project provides excellent opportunities for:

Professional Development Training

- People who support employed learners with English and maths
- Providers who deliver Skills for Life in the workplace

Employers

- Free training for employers to upskill their staff
- Delivery of training in the workplace
- Training developed with the employer to meet the needs of their staff

Skills for Life Learners

- Employed people who need help with English and maths
- Employed people for whom English is not their first language

How can I find out more?

As this project is being delivered across the South East you should contact the project lead in your area as detailed overleaf. Your project lead will be able to tell you how you could benefit.

Who do I contact for more information?

Organisations in Surrey, Sussex and Kent should contact:

The Skills for Life Development Centre

Janette Fowler jfowler@cftb.com or Cori Samuel csamuel@cftb.com

Tel: 01273 704530
Email: sfldc@cftb.com
Web: www.sfldc.org

Address: The Sussex Innovation Centre
Science Park Square
Falmer
Brighton
BN1 9SB

Organisations in Hampshire & the Isle of Wight should contact:

The Essential Skills Support Unit

Jo Bourne jobourne@essu.org or Hilary Fellows hilaryfellows@essu.org

Tel: 01329 286460
Email: training@essu.org
Web: www.essu.org

Address: Suite 1, Faretec
Cams Hall Estate
Fareham
Hampshire
PO16 8UY

Organisations in the Thames Valley area should contact:

The Thames Valley Professional Development Network

Joy Evans JoyEvans@thamesvalleypdn.org.uk

Tel: 0118 967 5339
Email: JoyEvans@thamesvalleypdn.org.uk
Web: www.thamesvalleypdn.org.uk

Address: c/o TVU
Crescent Road
Reading
RG1 5RQ



Partners

ACRES	Learn to Care
Asphaleia Training	MB Learning
Baldwin Training Centre	Medway Adult Learning Services
Barton Peveril College	METCic
Basingstoke College	Mid Kent College
Bracknell & Wokingham College	Milton Keynes Adult Continuing Education
Brighton & Hove Council	Milton Keynes College
Brockenhurst College	NESCOT
Brooklands College	New Directions
Central Sussex College	Newbury College
Chichester College	North West Kent College
City College Brighton and Hove	Oxford & Cherwell College
CKW Training Ltd	Portsmouth College
East Berkshire College	Reading Borough Council
East Surrey College	SE&DA Ltd
Eastleigh College	Skills for Life Development Centre
EFH English Language Training	South Kent College
E-Skills Training Ltd	Southampton City College
ESSU	Strodes College
Everyday Recruitment	Surrey County Council
Fareham College	Sussex Downs College
Friends Centre	Thames Valley PDN
Godalming College	Thanet College
Business Training Services	Totton College
Guildford College	Tutor Care
Hastings College	Vardean College
Highbury College	West Kent College
Hill McManus Ltd	West Sussex Adult Education
IoW College	
Itchen College	
Kent Adult Education	

